



Certificate of Analysis

CANNABUSINESS LABORATORIES, LLC

Customer:
South Point Hemp
50 Hi Line Dr
Union, MO 63084

Sample ID **250311001**
Order Number **CB250311003**
Sample Name **TncCWCB2506**

Received Date **3/13/2025**
COA Released **3/14/2025**

External Sample ID

Batch Number

Comments

Product Type **Edible**
Sample Type **Edible**

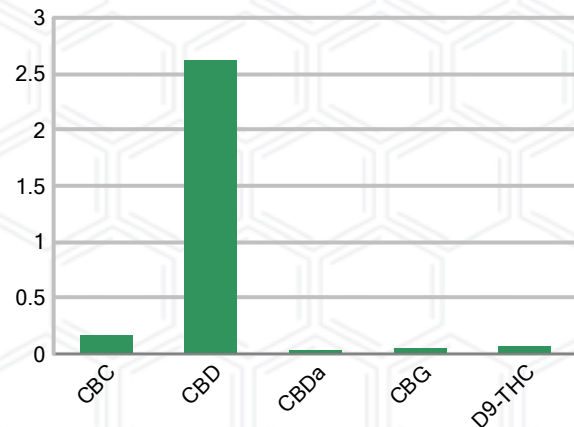
CANNABINOID PROFILE (Product Size = 0.5 mL)

Analyte	LOQ (%)	% Weight	mg/mL	mL/serving
CBC	0.01	0.164	1.527	0.76
CBD	0.01	2.621	24.38	12.19
CBDa	0.01	0.029	0.269	0.13
CBDV	0.01	ND	ND	ND
CBG	0.01	0.051	0.476	0.24
CBGa	0.01	ND	ND	ND
CBN	0.01	ND	ND	ND
d8-THC	0.01	ND	ND	ND
d9-THC	0.01	0.065	0.608	0.30
THCa	0.01	ND	ND	ND
Total Cannabinoids		2.931	27.26	13.63
Total Potential THC		0.065	0.608	0.30
Total Potential CBD		2.646	24.61	12.30
Total Potential CBG		0.051	0.476	0.24
Ratio of Total Potential CBD to Total Potential THC			40.71	: 1
Ratio of Total Potential CBG to Total Potential THC			0.79	: 1

SAMPLE IMAGE



CANNABINOIDS % Weight



*Total Cannabinoids refers to the sum of all cannabinoids detected.

*Total Potential CBD = (0.877 x CBDa) + CBD. *Total Potential THC = (0.877 x THCa) + THC. *Total Potential CBG = (0.877 x CBGa) + CBG.

*Total Potential THC/CBD are calculated to take into account the loss of an acid group during decarboxylation.



J. Hobgood
Laboratory Manager

SIGNATURE

Jamie Hobgood

LABORATORY MANAGER

03/14/2025 2:32 PM

DATE

This product has been tested by CannaBusiness Laboratories using validated testing methodologies and a quality system. Values reported relate only to the product tested. CannaBusiness Laboratories makes no claims as to the efficacy, safety, or other risks associated with any detected or non-detected levels of any compounds reported herein. This Certificate shall not be reproduced except in full, without the written permission of CannaBusiness Laboratories. Photo is of sample received by the lab and may vary from final packaging. The results apply to the sample as received.





Certificate of Analysis

CANNABUSINESS LABORATORIES, LLC

Customer

South Point Hemp
50 Hi Line Dr
Union, MO 63084



Sample Name: TncCWCBD2506

Sample ID: 250311001

Order Number: CB250311003

Product Type: Edible

Sample Type: Edible

Received Date: 03/13/2025

Batch Number:

COA released: 03/14/2025 2:33 PM

Potency (mg/mL)			
Date Tested: 03/14/2025		Method: CB-SOP-028	
Instrument:			
0.065 %	2.646 %	2.931 %	27.26 mg/mL
Total THC	Total CBD	Total Cannabinoids	Total Cannabinoids

Analyte	Result	Units	LOQ	Result	Units
CBC (Cannabichromene)	0.164	%	0.010	1.527	mg/mL
CBD (Cannabidiol)	2.621	%	0.010	24.38	mg/mL
CBDa (Cannabidiolic Acid)	0.029	%	0.010	0.269	mg/mL
CBDV (Cannabidivarin)	ND	%	0.010	ND	mg/mL
CBG (Cannabigerol)	0.051	%	0.010	0.476	mg/mL
CBGa (Cannabigerolic Acid)	ND	%	0.010	ND	mg/mL
CBN (Cannabinol)	ND	%	0.010	ND	mg/mL
D8-THC (D8-Tetrahydrocannabinol)	ND	%	0.010	ND	mg/mL
D9-THC (D9-Tetrahydrocannabinol)	0.065	%	0.010	0.608	mg/mL
THCa (Tetrahydrocannabinolic Acid)	ND	%	0.010	ND	mg/mL



J. Hobgood
Laboratory Manager

Jamie Hobgood

03/14/2025 2:33 PM

SIGNATURE

DATE

NT = Not tested, ND = Not detected; LOQ = Limit of Quantitation; <LOQ = Detected; >ULOL = Above upper limit of linearity; CFU/g = Colony forming units per 1 gram; TNTC = Too numerous to count

This product has been tested by CannaBusiness Laboratories using validated testing methodologies and a quality system. Values reported relate only to the product tested. CannaBusiness Laboratories makes no claims as to the efficacy, safety, or other risks associated with any detected or non-detected levels of any compounds reported herein. This Certificate shall not be reproduced except in full, without the written permission of CannaBusiness Laboratories. Photo is of sample received by the lab and may vary from final packaging. The results apply to the sample as received.